

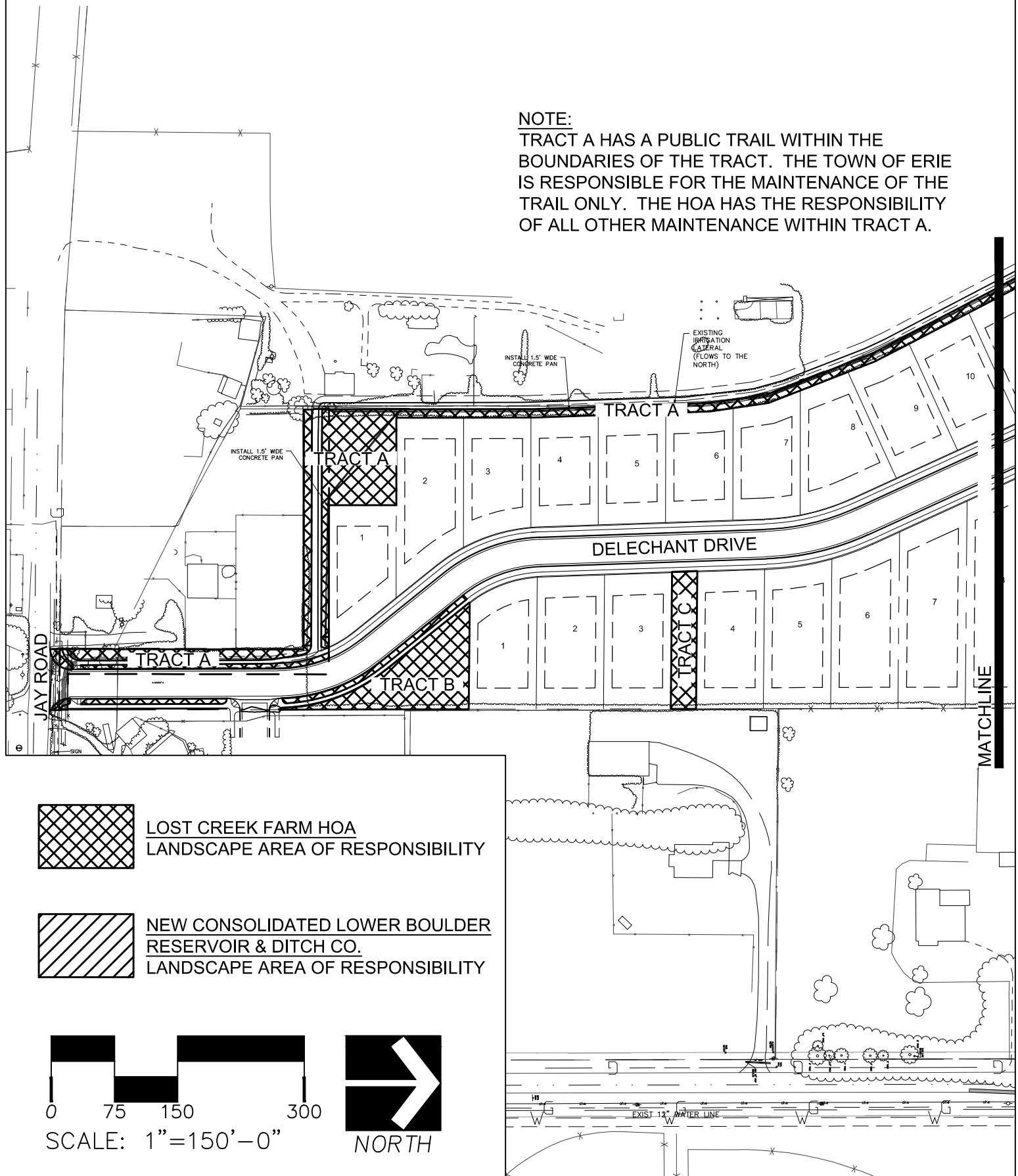
LOST CREEK FARM

LANDSCAPE MAINTENANCE RESPONSIBILITY MAP

November 21, 2016

NOTE:

TRACT A HAS A PUBLIC TRAIL WITHIN THE BOUNDARIES OF THE TRACT. THE TOWN OF ERIE IS RESPONSIBLE FOR THE MAINTENANCE OF THE TRAIL ONLY. THE HOA HAS THE RESPONSIBILITY OF ALL OTHER MAINTENANCE WITHIN TRACT A.



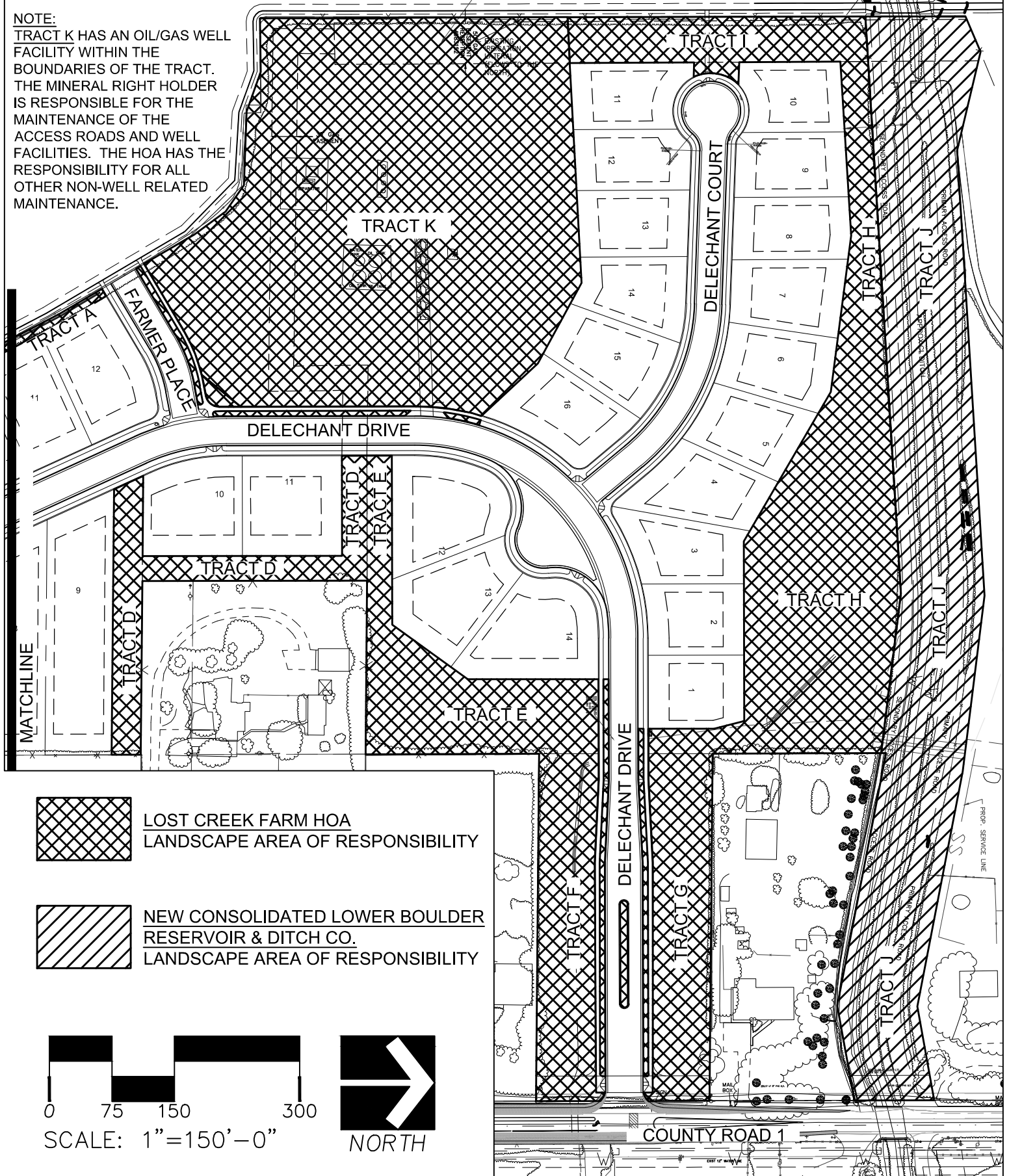
LOST CREEK FARM

LANDSCAPE MAINTENANCE RESPONSIBILITY MAP

November 21, 2016

NOTE:

TRACT K HAS AN OIL/GAS WELL FACILITY WITHIN THE BOUNDARIES OF THE TRACT. THE MINERAL RIGHT HOLDER IS RESPONSIBLE FOR THE MAINTENANCE OF THE ACCESS ROADS AND WELL FACILITIES. THE HOA HAS THE RESPONSIBILITY FOR ALL OTHER NON-WELL RELATED MAINTENANCE.



LOST CREEK FARM MAINTENANCE RESPONSIBILITY GUIDE

3/7/2017

Reference Maintenance Map for Details

The recorded Plat and Declaration of Covenants, Conditions, & Restrictions is the governing and prevailing document outlining maintenance responsibilities.

NO.	ITEM	HOMEOWNERS ASSOCIATION RESPONSIBILITY	HOMEOWNER RESPONSIBILITY	OTHER RESPONSIBLE PARTY
1	Asphalt Paving, Concrete Curb/Gutter, Sidewalk, and Curb Drain System	Snow removal at sidewalks adjacent to Tracts is by the Association	Snow removal at sidewalks adjacent to lot lines is by the Homeowner	Maintained by the Town of Erie
2	Tracts A, B, C, D, E, F, G, H, and I	Owned and maintained by the Association	None	Maintenance and snow removal of the Walking Trail in Tract A are by the Town of Erie
3	Tract J	None	None	Maintained by the Consolidated Lower Boulder Reservoir and Ditch Company
4	Tract K	By the Association except access and facilities maintained by gas company	None	None
5	Street Median(s)	Planting areas maintained by the Association	None	Maintenance of structural improvements by the Town of Erie
6	Fencing	Maintenance of fencing along tract boundaries (that are not also adjacent to lot lines) is by the Association	Ownership and maintenance of fencing along lot lines are by the Homeowner	Fencing around gas facilities within Tract K is maintained by the gas company
7	Monument Signs and Lighting	Owned and maintained by the Association	None	None
8	Mailbox - Cluster Units	Owned and maintained by the Association	None	None
9	Street Lights	None	None	Owned and maintained by Xcel Energy
10	Individual Lots and Improvements Including Area Between Back of Curb and Lot Line Along Right of Way	None	Maintained by the Homeowner	None